

# KMT Waterjet Cutting Pumps

## STREAMLINE® SL-VI 60,000psi/100hp

### THE RIGHT SOLUTION FOR EVERY APPLICATION

The KMT STREAMLINE® SL-VI Series utilizes the latest technology and an innovative configurable design for ease of use, reliability and convenience---the result is a system that delivers the highest efficiency and profit.



SL-VI s-Series  
(Basic Model)



SL-VI e-Series  
(Economical Model)



SL-VI i Series  
(Fully Loaded)



NUMBER OF CUTTING HEADS	ORIFICE SIZE	@PSI
1 (1.88 gpm max)	.019"	60,000
2 (1.88 gpm max)	.013"	60,000
1 (2.00 gpm max)	.020"	55,000
2 (2.00 gpm max)	.014"	55,000

\*Values good for 60Hz & 50Hz



#### Key Pump Features and Options Include:

**Proven Technology** STREAMLINE® SL-VI uses intensifier technology that has millions of operational usage hours

**Modular Design** Variety of choices to meet OEM and customer requirements

**High Pressure Intensifiers** 60,000psi redundant topworks\*

**Horsepower Selection** 100hp

**Top Cover Guard Interlock Design\*** Meets EN ISO13849-1 Safety Performance Standard PLa rating

**Power Factor Correction\*** Reduce electrical demand and operating costs

**IE3 and NEMA Premium Motor Design** Optimized motor efficiency, reduced electrical consumption

**Siemens PLC Based Electrical Panel** Universal design for global network support

**Redesigned Electrical Panel** Separation of High Voltage & Low Voltage sections meet IEC/EN 60204-1 Standards

\*Optional

The Right Pump Matters



# SPECIFICATIONS

DESCRIPTION	UNIT	100
Motor Rating	kW/HP	75/100
Pressure Range	PSI	60,000
Max. Flow Rate at Max. Pressure (60 Hz)	gal/min	1.88
Length	in	83.7
Width	in	53.7
Height	in	59.3
<b>Cutting Water Circuit</b>		
Intensification Ratio		22.9
Max. Stroke Rate	SPM	*75
Attenuator Volume	Liter	2
Cutting Water Inlet Pressure	PSI	35-100
Min. Cutting Water Inlet Flow	gal/min	7.0
Low Pressure Filter	µm abs.	10
<b>Controls &amp; Electric</b>		
Nom. Current at 480V/60Hz	A	124
<b>Hydraulics</b>		
Hydraulic Tank Capacity	gal	58
Oil Level and Temperature Control		Sensor
<b>Standard Features</b>		
Adjustable Booster Pump		•
Cutting Water Inlet Shut-Off Valve		•
Dual Pressure Setting		•
Oil Drip Pan		•
Dump Valve		•
Water Cooled Heat Exchanger		•
<b>Options</b>		
Additional Liter of Attenuation		◦
Air Cooled Heat Exchanger		◦
Cover		•
Doors		•
Electric Panel & Cabinet		◦
High Pressure Transducer		◦
Motor Rewind for 575v & CSA		◦
Power Factor Correction		◦
Proportional Control		◦
Redundant Intensifier		◦
Soft Start/Electronic/Y-Delta		◦
USDA		◦

**NOTE: Applies to all pumps:**

Hydraulic Tank Capacity 40 gal  
 Min. pneumatic air pressure 86 PSI  
 Max. pneumatic air flow rate 1 SCFM  
 Ambient temp. @ Oil-to-Water cooling circuit 41 - 106°F  
 Ambient temp. @ Oil-to-Air cooling circuit 41 - 86°F

- Standard
- Option
- \* Estimated

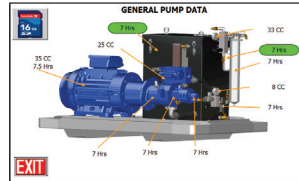


**KMT Waterjet Systems Inc.**  
 635 West 12th Street  
 Baxter Springs, KS 66713 USA  
 620-856-2151 • 800-826-9274  
[sales@kmtwaterjet.com](mailto:sales@kmtwaterjet.com)

## NEW! Siemens PLC Based Electrical Panel



The Home Screen displays the operating status of the machine and provides access to a series of setup and monitoring screens.



**Harmonized PLC Platform** NEW Touch screen is software updateable, offers 11 languages, optional gauges, and includes monitoring hours and cycle times for preventive maintenance. Standard systems offer Ethernet and USB Port with import/export capabilities.



**KMT Waterjet now offers a Cut Calculator APP that compares 90,000psi to 60,000psi cutting. Increase Productivity @ 90,000psi!**



THE HEART OF WATERJET CUTTING

[kmtwaterjet.com](http://kmtwaterjet.com)



5/31/2016 - R5  
 UPDATED GRAPHICS